

COMPLIMENTS OF  
**Timberline Tile & Escrow**  
 THIS SKETCH IS FURNISHED TO ASSIST IN  
 PROPERTY LOCATION AND THE CONTRACTOR  
 DOES NOT GUARANTEE ITS ACCURACY.

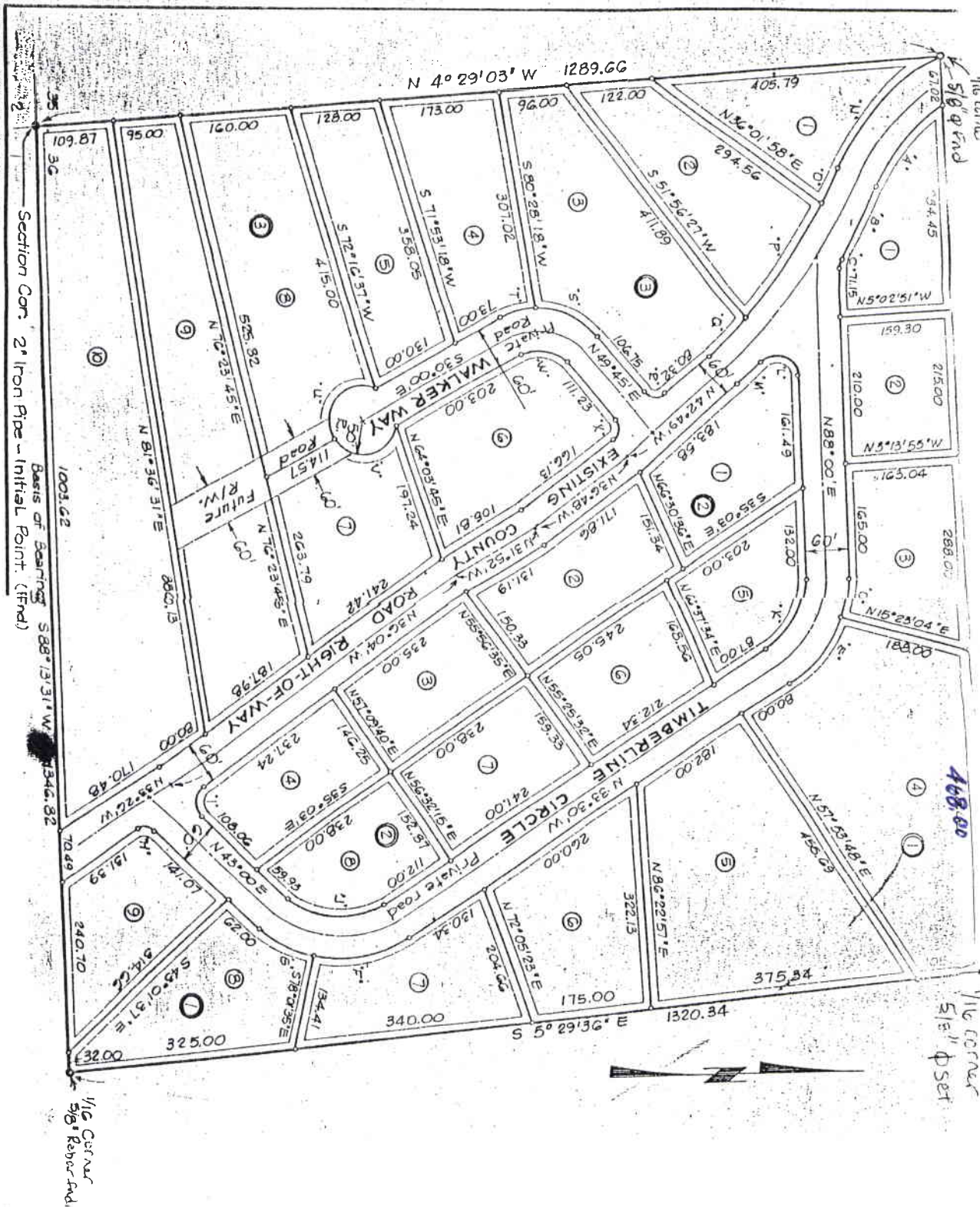
COMPLIMENTS OF

**Timberline Tile & Escrow**

THIS SKETCH IS FURNISHED TO ASSIST IN

PROPERTY LOCATION AND THE CONTRACTOR

DOES NOT GUARANTEE ITS ACCURACY.

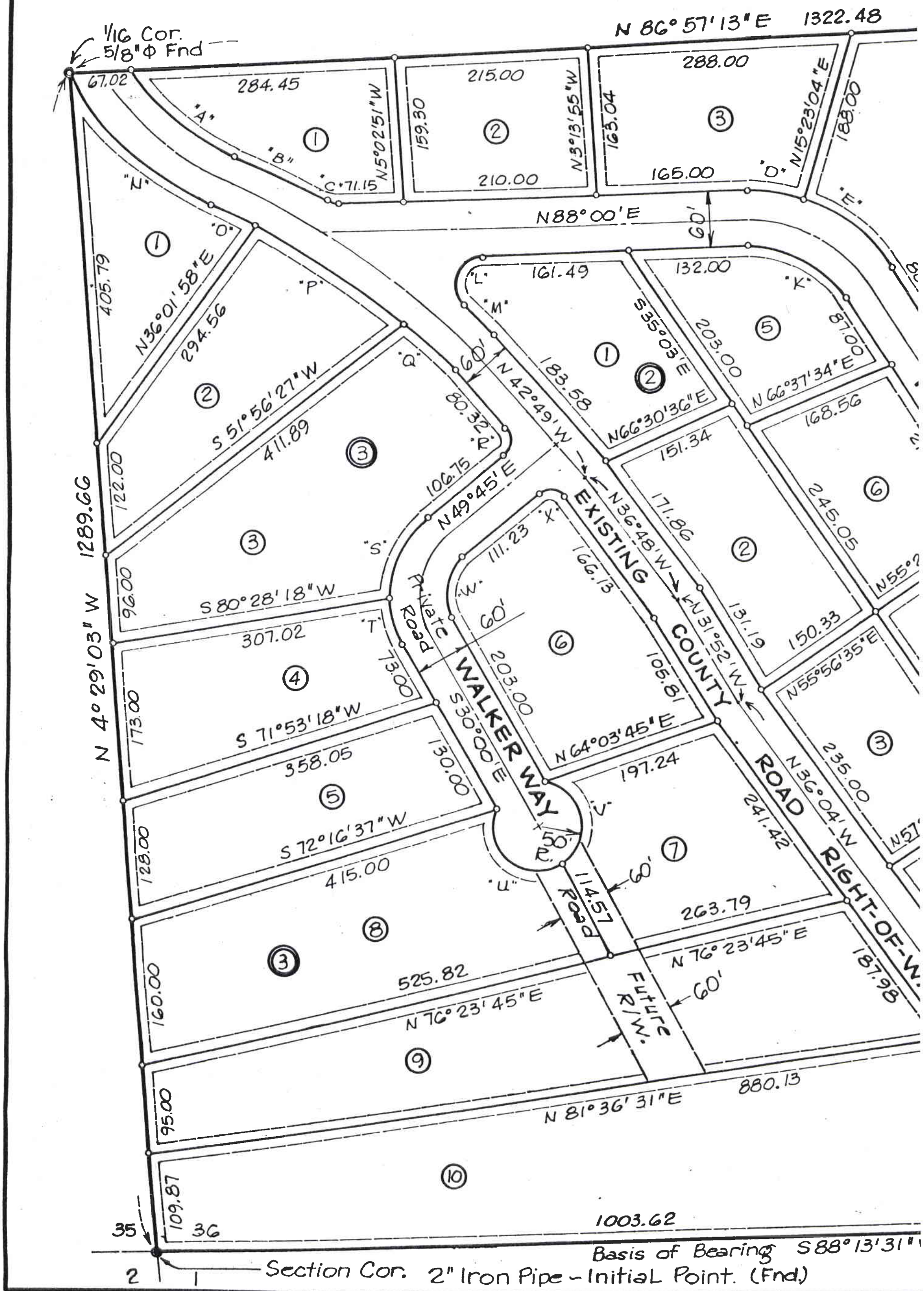


Walker Timberline Resort  
 SW 1/4 SW 1/4 Section 30 T19N R1E



# WALKER'S TIMBER

SW 4, OF THE SW 4,  
T. 19 N., R. 1 E, B.M.  
— DAVE ROYLANCE  
1975



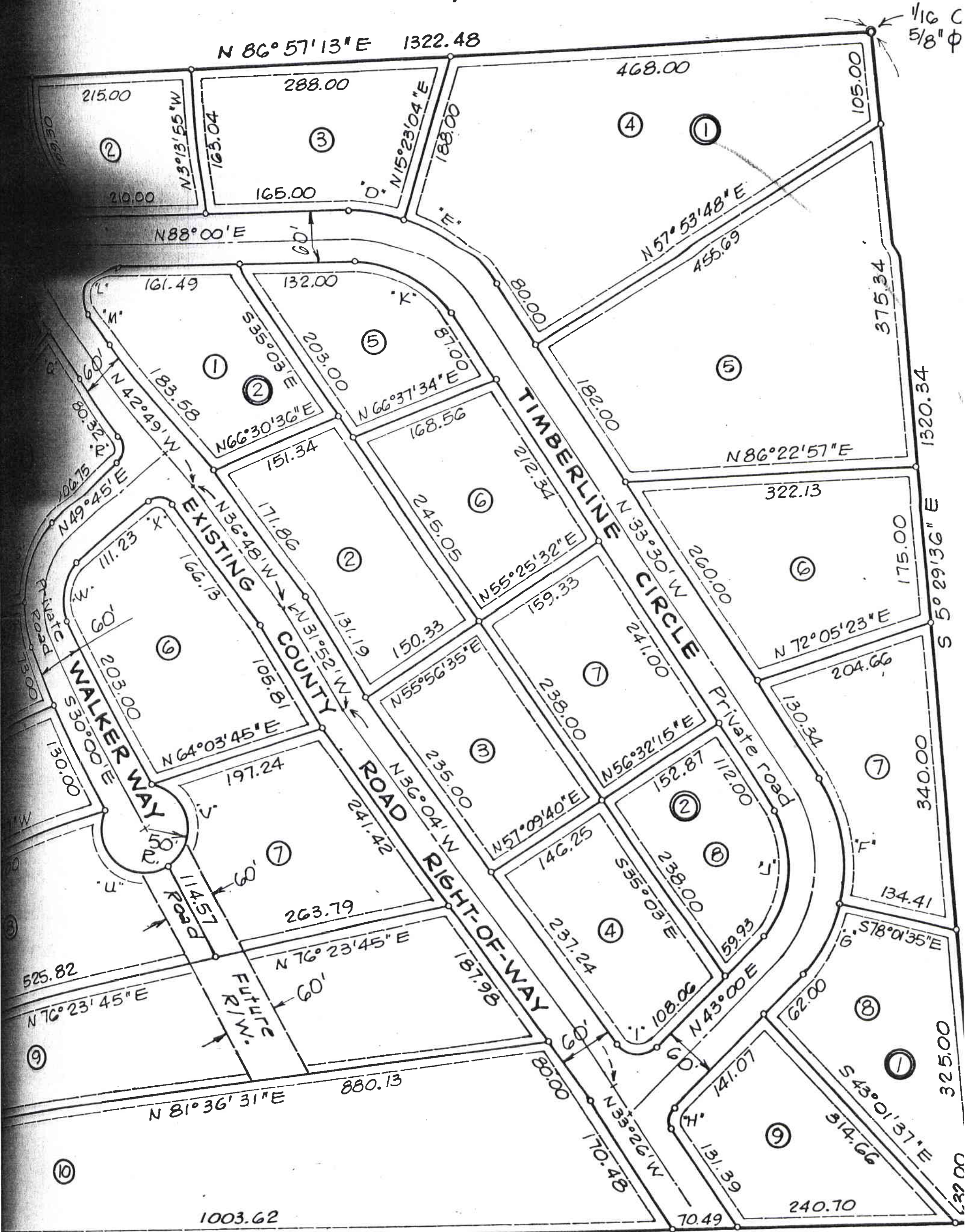


# WALKER'S TIMBERLINE RESORT

SW 4, OF THE SW 4, OF SECTION 36,  
T. 19 N., R. 1 E., B.M. ADAMS COUNTY, IDAHO

DAVE ROYLANCE ENGINEERING

1975



Basis of Bearing  $S 88^{\circ} 13' 31'' W$  1346.82

on 2" Iron Pipe - Initial Point. (Fnd)



# LINE RESORT

SECTION 36,  
S COUNTY, IDAHO  
SINEERING

SCALE

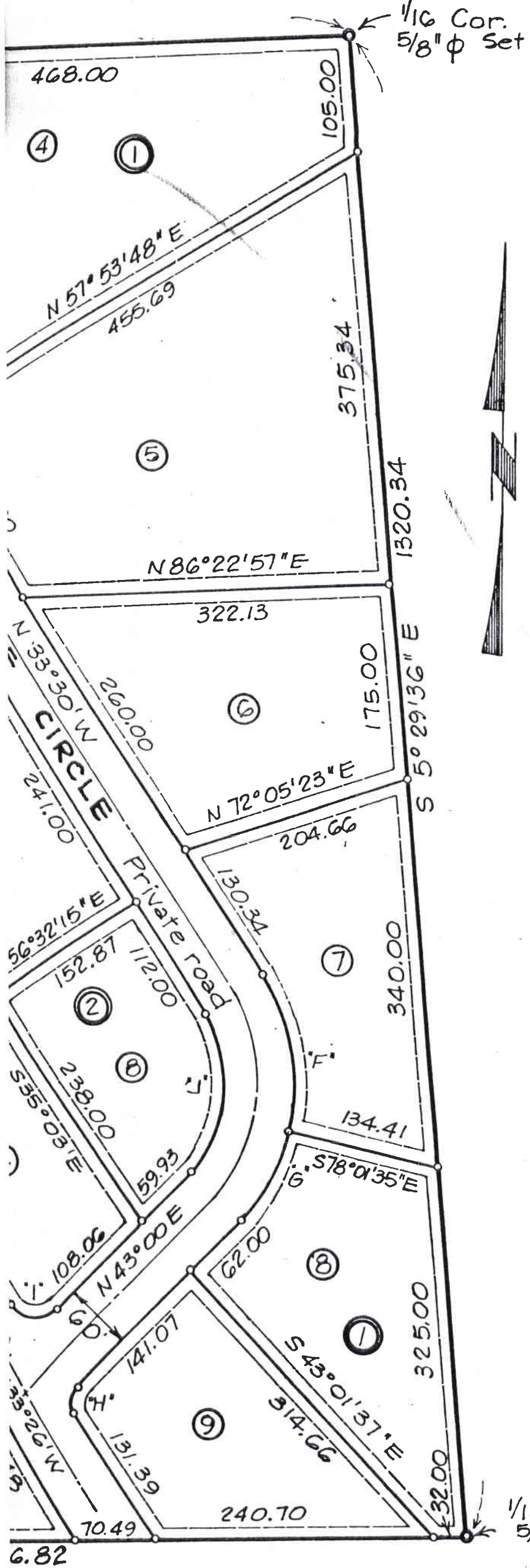
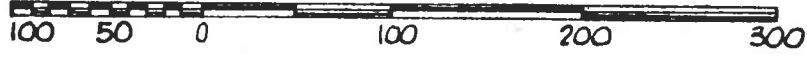


TABLE OF CURVE DATA

Curve	Radius	Delta	Long Chord	Bearing	Distance
A	243.25	35°32'17"	N 50°35'52" W	148.47	
B	770.95	8°23'24"	N 64°10'22" W	112.79	
C	20.00	32°00'48"	N 75°59'25" W	11.03	
D	185.00	38°30'00"	N 82°00'00" W	121.98	
E	185.00	38°30'00"	N 52°45'00" W	64.25	
F	175.00	47°30'00"	N 9°44'55" W	140.96	
G	175.00	29°00'00"	N 28°30'00" E	87.63	
H	20.00	76°26'00"	N 4°46'56" E	24.74	
I	30.00	100°56'00"	S 86°32'01" E	46.28	
J	115.00	76°30'00"	N 4°45'01" E	142.39	
K	125.00	58°30'00"	N 62°45'04" W	122.15	
L	30.00	134°26'26"	N 20°47'24" E	55.32	
M	770.95	3°36'07"	N 44°37'11" W	48.46	
N	303.25	41°50'32"	N 47°26'54" W	216.57	
O	770.95	4°00'00"	N 66°22'38" W	49.62	
P	770.95	15°33'00"	N 56°35'30" W	192.36	
Q	770.95	4°00'00"	N 66°22'38" W	49.62	
R	20.00	92°34'00"	S 3°27'59" W	28.91	
S	110.00	53°00'00"	S 23°15'18" W	98.16	
T	110.00	26°45'00"	S 16°37'29" E	50.89	
U	50.00	143°08'10"	S 48°26'06" E	94.87	
V	50.00	143°08'10"	S 11°33'54" E	94.87	
W	50.00	79°45'00"	N 9°52'30" E	64.11	
X	20.00	87°26'00"	S 86°32'05" E	27.64	

Block 1 = 9 Lots  
 Block 2 = 8 lots  
 Block 3 = 10 lots  
 Total Lots 27

Legend

- 1/2" x 24" Steel pins
- 5/8" x 30" Steel pins
- 2" Iron pipe
- - - 10' Utility easement
- ① Lot number
- ① Block number

(1) Timberline Circle and Walker Way are private roads. Any maintenance shall be done by the Homeowners Association. Adams County assumes no responsibility for snow removal or maintenance until roads are built to County Specifications and dedicated to the County.

(2) Building and Occupancy shall conform to the standards established by the Restrictive Covenants as filed in Book 84 of Miscellaneous records at page 349 at the Adams County Recorders Office.

I David H. Roylance, P.E., do hereby certify that this plat is a true and exact copy of the original.

*David H. Roylance*  
 David H. Roylance P.E.  
 Idaho 2848

54172