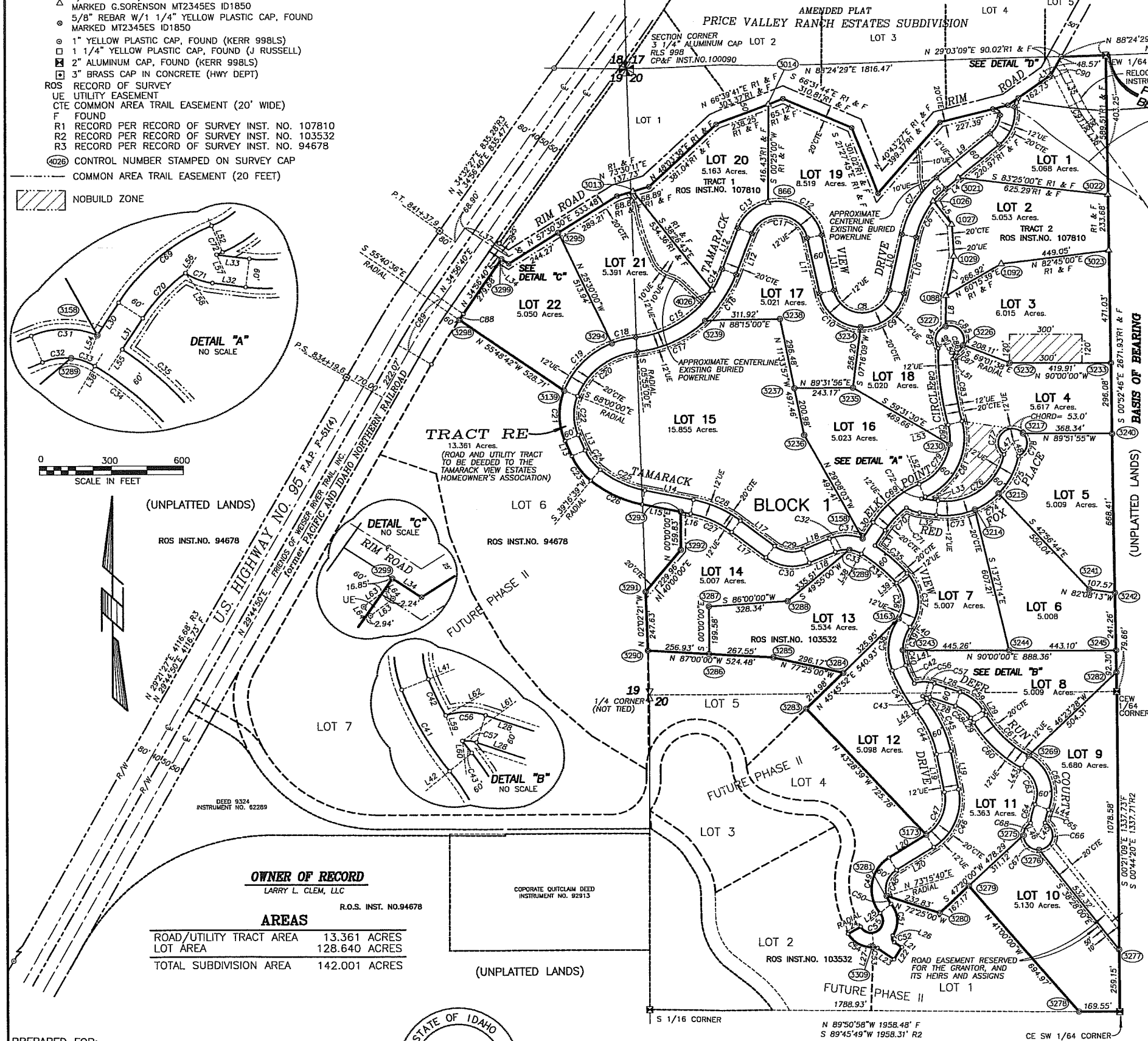


LEGEND

- 5/8" REBAR W/2" ALUMINUM CAP, SET MARKED G.SORENSEN MT2345ES ID1850
- 5/8" REBAR W/1 1/4" YELLOW PLASTIC CAP, SET MARKED MT2345ES ID1850
- △ 5/8" REBAR W/2" ALUMINUM CAP, FOUND MARKED G.SORENSEN MT2345ES ID1850
- 5/8" REBAR W/1 1/4" YELLOW PLASTIC CAP, FOUND MARKED MT2345ES ID1850
- 1" YELLOW PLASTIC CAP, FOUND (KERR 998LS)
- 1 1/4" YELLOW PLASTIC CAP, FOUND (J RUSSELL)
- 2" ALUMINUM CAP, FOUND (KERR 998LS)
- 3" BRASS CAP IN CONCRETE (HWY DEPT)
- ROS RECORD OF SURVEY
- UE UTILITY EASEMENT
- CTE COMMON AREA TRAIL EASEMENT (20' WIDE)
- F FOUND
- R1 RECORD PER RECORD OF SURVEY INST. NO. 107810
- R2 RECORD PER RECORD OF SURVEY INST. NO. 103532
- R3 RECORD PER RECORD OF SURVEY INST. NO. 94678
- (026) CONTROL NUMBER STAMPED ON SURVEY CAP
- COMMON AREA TRAIL EASEMENT (20 FEET)
- NOBUILD ZONE

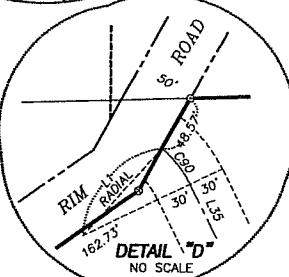
TAMARACK VIEW ESTATES—PHASE I

A SUBDIVISION OF ADAMS COUNTY, IDAHO; LOCATED IN PORTIONS OF THE NE 1/4 OF SECTION 19 AND PORTIONS OF THE NW 1/4 AND N 1/2 SW 1/4 OF SECTION 20, T.19 N., R.1 E., BOISE MERIDIAN, IDAHO



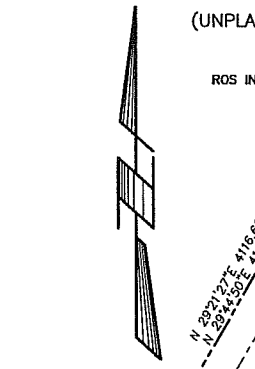
CURVE TABLE

NUM	DELTA	ARC	RADIUS	BEARING	DISTANCE	R/F
C1	110°26'34"	48.19'	25.00'	N49°00'14"W	41.07'	R1 & F
C2	62°16'17"	43.47'	40.00'	S23°48'03"W	41.37'	R1 & F
C3	44°05'56"	92.40'	120.00'	N28°16'31"E	90.13'	R1 & F
C4	57°40'05"	181.17'	180.00'	N21°29'57"E	173.62'	R1 & F
C5	11°24'02"	73.62'	370.00'	S44°37'59"W	73.50'	R1 & F
C6	26°25'58"	170.70'	370.00'	S25°42'59"W	169.19'	R1 & F
C7	37°50'00"	283.94'	430.00'	S31°25'00"W	278.81'	R1 & F
C8	155°10'00"	324.98'	120.00'	S89°55'00"E	234.39'	R1 & F
C9	79°10'00"	248.71'	180.00'	N52°05'00"E	229.39'	R1 & F
C10	76°00'00"	238.76'	180.00'	S50°20'00"E	221.64'	R1 & F
C11	147°00'00"	307.88'	120.00'	N85°50'00"W	230.12'	R1 & F
C12	92°09'44"	289.54'	180.00'	N58°24'52"W	259.32'	R1 & F
C13	54°50'16"	172.28'	180.00'	S48°05'08"W	165.78'	R1 & F
C14	12°43'31"	97.72'	440.00'	N27°01'45"E	97.52'	R1 & F
C15	50°41'29"	389.28'	440.00'	N58°44'15"E	376.71'	R1 & F
C16	26°55'03"	234.90'	500.00'	N34°07'32"E	232.75'	R1 & F
C17	36°29'57"	318.81'	500.00'	N65°50'02"E	313.16'	R1 & F
C18	16°17'06"	102.32'	360.00'	S75°56'27"W	101.98'	R1 & F
C19	45°47'54"	287.76'	360.00'	S44°53'57"W	280.16'	R1 & F
C20	62°05'00"	325.07'	300.00'	S53°02'30"W	309.40'	R1 & F
C21	45°50'01"	215.98'	270.00'	N00°55'00"W	210.27'	R1 & F
C22	45°50'01"	167.99'	210.00'	S00°55'00"E	163.54'	R1 & F
C23	26°53'21"	131.41'	280.00'	N37°16'41"W	130.20'	R1 & F
C24	26°53'21"	103.25'	220.00'	S37°16'41"E	102.30'	R1 & F
C25	28°16'39"	207.28'	420.00'	S64°51'41"E	205.19'	R1 & F
C26	28°16'39"	236.90'	480.00'	N64°51'41"W	234.50'	R1 & F
C27	26°00'00"	190.59'	420.00'	N66°00'00"W	188.96'	R1 & F
C28	26°00'00"	217.82'	420.00'	N66°00'00"W	215.95'	R1 & F
C29	60°05'00"	125.84'	120.00'	S83°02'30"E	120.15'	R1 & F
C30	60°05'00"	188.76'	180.00'	S83°02'30"E	180.23'	R1 & F
C31	45°20'21"	142.44'	180.00'	S89°35'10"W	138.75'	R1 & F
C32	29°10'25"	61.10'	120.00'	S81°30'13"W	60.44'	R1 & F
C33	25°29'35"	53.39'	120.00'	N71°09'47"W	52.95'	R1 & F
C34	16°25'00"	191.97'	670.00'	N50°12'30"W	191.31'	R1 & F
C35	13°59'24"	178.25'	730.00'	N48°59'42"W	177.80'	R1 & F
C36	77°35'00"	162.49'	120.00'	N03°12'30"W	150.36'	R1 & F
C37	77°35'00"	243.74'	180.00'	N03°12'30"W	225.54'	R1 & F
C38	56°53'38"	228.39'	230.00'	S07°08'11"W	219.12'	R1 & F
C39	34°58'54"	103.79'	170.00'	S18°05'33"W	102.19'	R1 & F
C40	21°54'44"	65.02'	170.00'	S10°21'16"E	64.62'	R1 & F
C41	18°02'14"	198.33'	630.00'	S30°19'45"E	197.51'	R1 & F
C42	08°27'25"	84.13'	570.00'	S25°32'20"E	84.06'	R1 & F
C43	03°10'39"	31.61'	570.00'	S37°45'33"E	31.61'	R1 & F
C44	28°00'52"	200.47'	410.00'	N25°20'26"W	198.48'	R1 & F
C45	28°00'52"	229.80'	470.00'	N25°20'26"W	227.52'	R1 & F
C46	69°40'00"	279.66'	230.00'	N23°30'00"E	262.75'	R1 & F
C47	69°40'00"	206.71'	170.00'	N23°30'00"E	194.21'	R1 & F
C48	75°04'20"	124.47'	95.00'	S20°47'50"W	115.76'	R1 & F
C49	98°07'50"	265.47'	155.00'	N09°16'05"E	234.19'	R1 & F
C50	23°03'30"	38.23'	95.00'	S28°16'05"E	37.97'	R1 & F
C51	73°37'01"	141.33'	110.00'	S02°59'20"E	131.81'	R1 & F
C52	90°30'28"	31.59'	20.00'	S11°26'03"E	28.41'	R1 & F
C53	38°54'24"	13.58'	20.00'	N76°08'48"W	13.32'	R1 & F
C54	66°05'13"	126.88'	110.00'	N62°33'24"W	119.96'	R1 & F
C55	190°17'03"	166.05'	50.00'	N55°20'41"E	99.60'	R1 & F
C56	37°26'13"	84.94'	130.00'	S89°51'54"W	83.44'	R1 & F
C57	24°37'18"	30.08'	70.00'	N83°43'39"W	29.85'	R1 & F
C58	40°00'00"	83.78'	120.00'	N51°25'00"W	82.08'	R1 & F
C59	40°00'00"	125.66'	180.00'	N51°25'00"W	123.13'	R1 & F
C60	30°09'48"	279.02'	530.00'	S46°29'54"E	275.81'	R1 & F
C61	30°09'48"	247.43'	470.00'	S46°29'54"E	244.58'	R1 & F
C62	83°55'40"	263.67'	180.00'	N19°36'58"W	240.72'	R1 & F
C63	83°55'40"	175.78'	120.00'	N19°36'58"W	160.48'	R1 & F
C64	17°52'37"	81.12'	260.00'	S13°24'34"W	80.79'	R1 & F
C65	16°09'33"	56.41'	200.00'	S14°16'06"W	56.22'	R1 & F
C66	147°11'36"	154.14'	60.00'	N12°35'04"E	115.12'	R1 & F
C67	93°49'08"	98.25'	60.00'	S46°54'34"E	87.63'	R1 & F
C68	58°33'33"	61.32'	60.00'	S29°16'47"W	58.69'	R1 & F
C69	34°00'30"	255.23'	430.00'	S50°19'45"W	251.50'	R1 & F
C70	20°13'20"	130.59'	370.00'	S43°26'10"W	129.91'	R1 & F
C71	26°28'26"	60.07'	130.00'	S69°20'46"E	59.53'	R1 & F
C72	2°06'42"	13.64'	370.00'	S66°16'39"W	13.64'	R1 & F
C73	30°36'48"	165.63'	310.00'	N82°06'37"E	163.67'	R1 & F
C74	22°23'57"	121.19'	310.00'	N55°36'14"E	120.42'	R1 & F
C75	33°08'22"	179.30'	310.00'	N27°50'05"E	176.81'	R1 & F
C76	84°59'58"	370.88'	250.00'	N54°55'02"E	337.79'	R1 & F
C77	190°52'04"	198.88'	60.00'	S42°03'23"W	119.46'	R1 & F
C78	108°50'40"	113.98'	60.00'	N11°54'45"E	97.60'	R1 & F
C79	59°58'07"	218.80'	210.00'	N37°20'57"E	209.90'	R1 & F
C80	22°21'53"	81.97'	210.00'	N3°49'03"W	81.45'	R1 & F
C81	82°20'00"	387.99'	270.00'	N26°10'00"E	355.46'	R1 & F
C82	15°07'21"	324.64'	1230.00'	S72°16'19"E	323.70'	R1 & F
C83	12°54'13"	263.49'	1170.00'	S8°32'53"E	262.94'	R1 & F
C84	108°37'00"	114.78'	60.00'	S18°54'28"W	98.07'	R1 & F
C85	127°15'23"	133.26'	60.00'	N42°39'20"W	107.51'	R1 & F
C86	41°05'44"	43.04'	60.00'	N41°31'13"E	42.12'	R1 & F
C87	64°09'52"	33.60'	30.00'	S29°58'09"W	31.87'	R1 & F
C88	03°17'16"	29.86'	2754.93'	N34°38'02"E	29.86'	R1 & F
C89	5°11'50"	259.57'	2864.93'	S32°20'45"W	259.78'	R1 & F
C90	5°12'00"	259.52'	2864.93'	S31°57'27"W	260.00'	R3
C91	22°13'15"	38.78'	100.00'	N37°01'38"W	38.54'	R1 & F
C92	8°55'00"	93.38'	600.00'	S30°22'30"E	93.28'	R1 & F



TANGENT TABLE

NUM	DISTANCE	BEARING	R/F
L1	100.00'	S41°51'45"W	RADIAL
L2	40.00'	N82°39'54"E	R1 & F
L3	25.00'	N83°46'56"W	R1 & F
L4	69.83'	N50°20'00"E	R1 & F
L5	126.01'	S37°57'00"E	R1 & F
L6	134.11'	S03°46'45"E	R1 & F
L7	167.72'	S11°29'33"W	R1 & F
L8	128.37'	S01°10'22"W	R1 & F
L9	290.80'	S50°20'00"W	R1 & F
L10	240.89'	S12°30'00"W	R1 & F
L11	237.86'	N12°20'00"W	R1 & F
L12	185.00'	S20°40'00"W	R1 & F
L13	70.51'	N23°50'00"W	R1 & F
L14	207.72'	S79°00'00"E	R1 & F
L15	165.02'	N79°00'00"E	R1 & F
L16	42.70'	S79°00'00"E	R1 & F
L17	176.64'	N53°00'00"E	R1 & F
L18	116.88'	N66°55'00"E	R1 & F
L19	161.80'	S11°20'00"E	R1 & F
L20	183.63'	N58°20'00"E	R1 & F
L21	37.95'	S64°12'28"E	R1 & F
L22	60.00'	S33°18'32"W	R1 & F
L23	86.30'	N56°41'28"W	R1 & F
L24	60.00'	N60°29'12"E	RADIAL
L25	50.00'	S50°12'10"W	RADIAL
L26	20.00'	S56°10'49"E	RADIAL
L27	110.00'	N05°36'00"W	RADIAL
L28	113.68'	S71°25'00"E	RADIAL
L29	22.88'	S31°25'00"W	RADIAL
L30	81.09'	N33°19'30"E	RADIAL
L31	77.54'	N33°19'30"E	RADIAL
L32	69.89'	S82°34'59"E	RADIAL
L33	68.56'	S82°34'59"E	RADIAL
L34	36.49'	S57°07'00"E	RADIAL
L35	137.01'	S25°55'00"W	RADIAL
L36	147.58'	S34°50'00"E	RADIAL
L37	219.67'	N57°07'00"W	RADIAL
L38	670.00'	S31°35'00"W	RADIAL
L39	120.00'	S48°00'00"W	RADIAL
L40	200.00'	S54°25'00"W	RADIAL
L41	570.00'	N68°41'22"E	RADIAL
L42	410.00'	S50°39'08"W	RADIAL
L43	120.00'	S28°25'12"W	RADIAL
L44	200.00'	S67°39'08"E	RADIAL
L45	60.00'	S28°59'16"W	RADIAL
L46	60.00'	S31°26'27"E	RADIAL
L47	60.00'	S36°37'21"W	RADIAL
L48	60.00'	N23°39'55"W	RADIAL
L49	60.00'	N54°05'58"E	RADIAL
L50	60.00'	N27°55'55"W	RADIAL
L51	30.00'	N87°54'12"E	RADIAL
L52	210.00'	N22°40'00"W	RADIAL
L53	210.00'	N75°00'00"E	RADIAL
L54	180.00'	S22°15'21"W	RADIAL
L55	730.00'	S34°00'35"W	RADIAL
L56	130.00'	N33°53'27"E	RADIAL
L57	370.00'	S24°46'42"E	RADIAL
L58	370.00'	S36°27'10"E	RADIAL
L59	130.00'	S18°51'13"E	RADIAL
L60	70.00'	S06°02'18"E	RADIAL
L61	570.00'	N53°49'47"E	RADIAL
L62	570.00'	N60°13'57"E	RADIAL
L63	29.75'	N53°11'00"E	RADIAL
L64	12.00'	N36°49'00"W	RADIAL



OWNER OF RECORD
LARRY L. CLEM, LLC
R.O.S. INST. NO. 94678

AREAS

ROAD/UTILITY TRACT AREA	13.361 ACRES
LOT AREA	128.640 ACRES
TOTAL SUBDIVISION AREA	142.001 ACRES



CERTIFICATE OF SOUTHWEST DISTRICT HEALTH DEPARTMENT *****
SANITARY RESTRICTIONS AS REQUIRED BY IDAHO CODE, TITLE 50, CHAPTER 13, HAVE BEEN SATISFIED. SANITARY RESTRICTIONS MAY BE REIMPOSED, IN ACCORDANCE WITH SECTION 50-1326, IDAHO CODE, BY THE ISSUANCE OF A CERTIFICATE OF DISAPPROVAL.
DISTRICT HEALTH DEPARTMENT, REHS
DATE: _____

PREPARED FOR:
LARRY CLEM

PREPARED BY:
GORDON SORENSON ENGINEERING
2610 GUNSIGHT COURT
MISSOULA, MT 59804
TEL 406-549-9693
C:\2004JOBS\04805\04805PLA.FLX

1/4 SEC	T.	R.
19	19N.	1E.
20	19N.	1E.

DRAWING DATE: DECEMBER 5, 2005
SHEET 1 OF 2